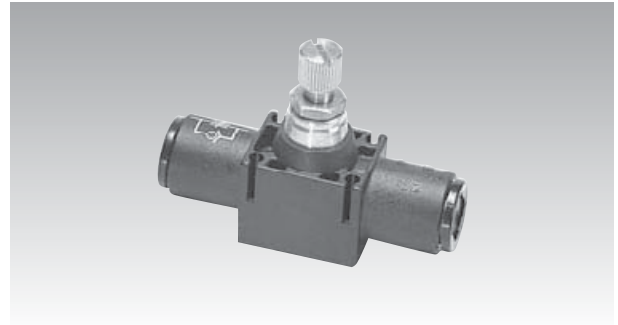


Release flow control valve

Features

This regulator basically is using in regulate the vacuum flow consumption which is not acceptable or release from vacuum release valve. It can be controlled the speed or volume at airflow in order to maintain the blow-off force to the object.



Order no.

7770 - 06

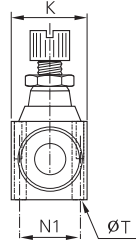
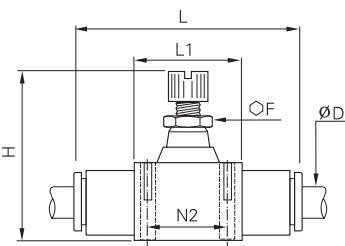
① Model

7770

② Tube size (Outer dia.)

04	-	Ø 4
• 06	-	Ø 6
08	-	Ø 8
10	-	Ø 10
12	-	Ø 12

Dimensional Information



ØD (mm)	model	F	H	H maxi	K	L	L1	ØT	kg
4	7770 04	5	29.5	33.5	12.0	39.0	15.0	2.2	0.01
6	7770 06	8	39.5	44.5	17.0	54.0	23.0	3.2	0.02
8	7770 08	11	44.0	50.0	18.5	60.5	26.0	3.2	0.04
10	7770 10	14	52.0	61.0	24.0	76.0	33.0	4.2	0.09
12	7770 12	14	57.5	67.5	28.0	86.0	35.0	4.2	0.13

7770

